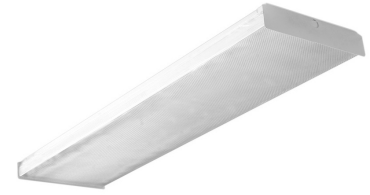


MY LED LIGHTING GUIDE

YOUR GUIDE TO ENERGY EFFICIENT LED LIGHTING

LED Wrap Around Fixture

Replaces: Fluorescent Troffer



Models and Specifications

Part Number	Watts	Lumens
MLLG-USA-LED-WRAP-35-[color]	35	4420
Replaces	Fluorescent Troffer	
Lumens Per Watt	130	
Voltage	100-277V [D]	
Frequency	50 / 60 hz	
Life Hours	100,000 hours	
Color Temperature	3000K 4000K 5000K	
CRI	80+	
Beam Angle	150°	
Operating Temperature	-20°C to +50°C	
Dimmable	0-10V	
Housing	Housing is one-piece, die-formed, 20-gauge spun steel. Finished in gloss white polyester powder-coat paint. White prismatic acrylic lens.	
Mounting	Ceiling mount	
Dimensions	47.7"L x 7"W x 2.8"H	
Weight	10	
Warranty	10 years	

Features

- LED Wrap Around Fixture with die formed heavy gauge steel with side flanges for extra uniformity and rigidity.
- Ballast cover snaps into housing to cover ballast and wires
- Socket plates slide on for easy wiring
- Fixture ends are die-formed for rigidity
- Post painted powder coated white finish
- Diffuser is designed for one-piece .125 thick prismatic lenses
- Snap on diffuser for easy servicing and hinge from either side
- May be surface or stem mounted individually or in continuous rows

Options

0-10V Dimming

Product enhancements may result in specification changes without notice. Contact us for the latest information

www.MyLEDLightingGuide.com (888) 423-3191