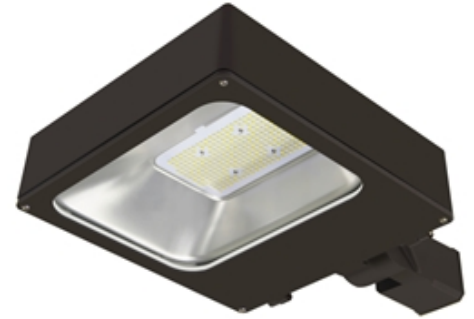


# MY LED LIGHTING GUIDE

YOUR GUIDE TO ENERGY EFFICIENT LED LIGHTING

## LED Outdoor Parking Shoebox Fixture

Replaces: 250W | 400W | 1000W Metal Halide



### Models and Specifications

Part Number	Watts	Lumens	Dimensions
MLLG-LED-SB2-65-[Color]-[Mount]	65	7,800	13"Lx11"Wx3"H
MLLG-LED-SB2-105-[Color]-[Mount]	105	13,650	13"Lx11"Wx3"H
MLLG-LED-SB2-140-[Color]-[Mount]	140	18,200	13"Lx11"Wx3"H
MLLG-LED-SB2-210-[Color]-[Mount]	210	27,300	17.7"Lx17.7"Wx3.89"H
MLLG-LED-SB2-300-[Color]-[Mount]	300	39,000	17.7"Lx17.7"Wx3.89"

<b>Replaces</b>	250W Metal Halide   400W Metal Halide   1000W Metal Halide
<b>Lumens Per Watt</b>	130
<b>Voltage</b>	100-277V [D]   347-480V [HV]
<b>Frequency</b>	50-60Hz
<b>Power Factor</b>	> .92
<b>THD</b>	< 15%
<b>Life Hours</b>	100,000 (L70) hours
<b>Color Temperature</b>	4000K   5000K
<b>CRI</b>	70+
<b>Beam Angle</b>	Type 3, 5
<b>Operating Temperature</b>	-35°C to +55°C
<b>IP Rating</b>	IP65
<b>Dimmable</b>	0-10V   Optional
<b>Housing</b>	IP 65 Aluminum Alloy and PC Lens
<b>Mounting</b>	Shoe Box ARM Mount [ARM], Slip-Fitter Mount [SF], Trunnion [TR]
<b>Weight</b>	0
<b>Warranty</b>	6 years

### Features

- MyLEDLightingGuide best solution for Parking Lot Areas roadways and campuses.
- One-piece aluminum heat sink brings a better performance of thermal management.
- Straight Pole Arm Slipfitter or Trunion Mount.
- 5 models to replace 250 400 and 1000W HID

### Options

Slip fitter Mount	Trunnion Mount	Straight Arm Mount
Photocell Option	Motion Sensor Option	Dimming: 0-10V

Product enhancements may result in specification changes without notice. Contact us for the latest information

[www.MyLEDLightingGuide.com](http://www.MyLEDLightingGuide.com) (888) 423-3191