

65W LED Shoebox Fixture

Replaces: 250W Metal Halide



Models and Specifications

Part Number	Watts	Lumens
MLLG-LED-SB2-65-[Color]	65	7800
Replaces	250W Metal Halide	
Lumens Per Watt	130	
Voltage	100-277V [D] 347-480V [HV]	
Frequency	50-60Hz	
Power Factor	> .92	
THD	< 15%	
Life Hours	100,000 (L70) hours	
Color Temp	4000K 5000K	
CRI	70+	
Beam Angle	Type 3, 5	
Operating Temp	-35°C to +55°C	
IP Rating	IP65	
Dimmable	0-10V Optional	
Housing	IP 65 Aluminum Alloy and PC Lens	
Mounting	Shoe Box ARM Mount [ARM], Slip-Fitter Mount [SF], Trunnion [TR]	
Dimensions	13"L X 11"W X 3"H	
Weight	0	
Warranty	6 years	

Features

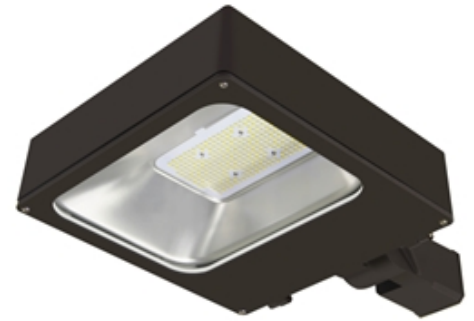
- MyLEDLightingGuide 65W LED Shoebox is a great solution for Lots roadways and campuses.
- One-piece aluminum heat sink brings a better performance of thermal management.
- Straight Pole Arm Slip fitter or Trunnion Mount.

Options

Slip fitter Mount	Trunnion Mount	Straight Arm Mount
Photocell Option	Motion Sensor Option	Dimming: 0-10V

105W LED Shoebox Fixture

Replaces: 250W Metal Halide



Models and Specifications

Part Number	Watts	Lumens
MLLG-LED-SB2-105-[Color]	105	12500
Replaces	250W Metal Halide	
Lumens Per Watt	130	
Voltage	100-277V [D] 347-480V [HV]	
Frequency	50-60Hz	
Power Factor	> .92	
THD	< 15%	
Life Hours	100,000 (L70) hours	
Color Temp	4000K 5000K	
CRI	70+	
Beam Angle	Type 3, 5	
Operating Temp	-35°C to +55°C	
IP Rating	IP65	
Dimmable	0-10V Optional	
Housing	IP 65 Aluminum Alloy and PC Lens	
Mounting	Shoe Box ARM Mount [ARM], Slip-Fitter Mount [SF], Trunnion [TR]	
Dimensions	13"L X 11"W X 3"H	
Weight	0	
Warranty	6 years	

Features

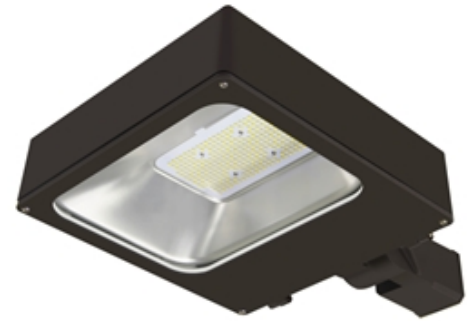
- MyLEDLightingGuide 110W LED Shoebox is a great solution for Lots roadways and campuses.
- One-piece aluminum heat sink brings a better performance of thermal management.
- Straight Pole Arm Slip fitter or Trunnion Mount.

Options

Slip fitter Mount	Trunnion Mount	Straight Arm Mount
Photocell Option	Motion Sensor Option	Dimming: 0-10V

140W LED Shoebox Fixture

Replaces: 400W Metal Halide



Models and Specifications

Part Number	Watts	Lumens
MLLG-LED-SB2-140-[Color]	140	16000
Replaces	400W Metal Halide	
Lumens Per Watt	130	
Voltage	100-277V [D] 347-480V [HV]	
Frequency	50-60Hz	
Power Factor	> .92	
THD	< 15%	
Life Hours	100,000 (L70) hours	
Color Temp	4000K 5000K	
CRI	70+	
Beam Angle	Type 3, 5	
Operating Temp	-35°C to +55°C	
IP Rating	IP65	
Dimmable	0-10V Optional	
Housing	IP 65 Aluminum Alloy and PC Lens	
Mounting	Shoe Box ARM Mount [ARM], Slip-Fitter Mount [SF], Trunnion [TR]	
Dimensions	13"L X 11"W X 3"H	
Weight	0	
Warranty	6 years	

Features

- MyLEDLightingGuide 140W LED Shoebox is a great solution for Lots roadways and campuses.
- One-piece aluminum heat sink brings a better performance of thermal management.
- Straight Pole Arm Slip fitter or Trunnion Mount.

Options

Slip fitter Mount	Trunnion Mount	Straight Arm Mount
Photocell Option	Motion Sensor Option	Dimming: 0-10V

210W LED Shoebox Fixture

Replaces: 400W Metal Halide



Models and Specifications

Part Number	Watts	Lumens
MLLG-LED-SB2-210-[Color]	210	26000
Replaces	400W Metal Halide	
Lumens Per Watt	130	
Voltage	100-277V [D] 347-480V [HV]	
Frequency	50-60Hz	
Power Factor	> .92	
THD	< 15%	
Life Hours	100,000 (L70) hours	
Color Temp	4000K 5000K	
CRI	70+	
Beam Angle	Type 3, 5	
Operating Temp	-35°C to +55°C	
IP Rating	IP65	
Dimmable	0-10V Optional	
Housing	IP 65 Aluminum Alloy and PC Lens	
Mounting	Shoe Box ARM Mount [ARM], Slip-Fitter Mount [SF], Trunnion [TR]	
Dimensions	17.7"L X 17.7"W X 3.89"H	
Weight	0	
Warranty	6 years	

Features

- MyLEDLightingGuide 210W LED Shoebox is a great solution for Lots roadways and campuses.
- One-piece aluminum heat sink brings a better performance of thermal management.
- Straight Pole Arm Slip fitter or Trunnion Mount.

Options

Slip fitter Mount	Trunnion Mount	Straight Arm Mount
Photocell Option	Motion Sensor Option	Dimming: 0-10V

300W LED Shoebox Fixture

Replaces: 1000W Metal Halide



Models and Specifications

Part Number	Watts	Lumens
MLLG-LED-SB2-300-[Color]	300	35000
Replaces	1000W Metal Halide	
Lumens Per Watt	130	
Voltage	100-277V [D] 347-480V [HV]	
Frequency	50-60Hz	
Power Factor	> .92	
THD	< 15%	
Life Hours	100,000 (L70) hours	
Color Temp	4000K 5000K	
CRI	70+	
Beam Angle	Type 3, 5	
Operating Temp	-35°C to +55°C	
IP Rating	IP65	
Dimmable	0-10V Optional	
Housing	IP 65 Aluminum Alloy and PC Lens	
Mounting	Shoe Box ARM Mount [ARM], Slip-Fitter Mount [SF], Trunnion [TR]	
Dimensions	17.7"L X 17.7"W X 3.89"	
Weight	0	
Warranty	6 years	

Features

- MyLEDLightingGuide 300W LED Shoebox is a great solution for Lots roadways and campuses.
- One-piece aluminum heat sink brings a better performance of thermal management.
- Straight Pole Arm Slip fitter or Trunnion Mount.

Options

Slip fitter Mount	Trunnion Mount	Straight Arm Mount
Photocell Option	Motion Sensor Option	Dimming: 0-10V