



MY LED LIGHTING GUIDE

YOUR GUIDE TO ENERGY EFFICIENT LED LIGHTING

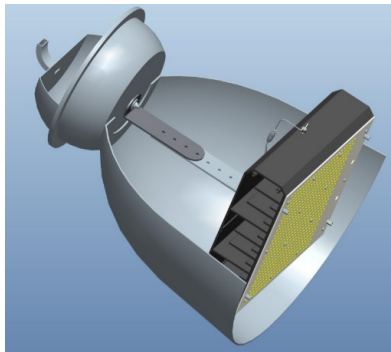
Retrofit Kit User Installation Manual - High Bays

WARNING:

- Risk of Fire / Electric Shock - Installation must be done by a qualified electrician.
- For your safety read and understand instructions completely before starting installation.

Important steps that should be followed before installing LED retrofit kits:

1. Make certain power is OFF before starting installation.
2. Remember this is a retrofit – so the goal is to establish your mounting approach and steps with the first one and then they will all be the same after that.
3. Determine if the retrofit should can be done when the fixture is mounted or if the fixture should be removed and retrofitted on the ground and then remounted. We usually find removing the fixture and upgrading will be easier at least for the first unit.



What comes with the unit:

LED Module

Mounting plates (3) – either you will use the smallest or none for the high bay installation

2 Piece Mount Bracket and L-piece that attached to the unit

Driver

Bag of wire nuts and screws

Note: as screws are removed from the fixture – they should be saved and reused where possible



www.MyLEDLightingGuide.com

(888) 423.3191

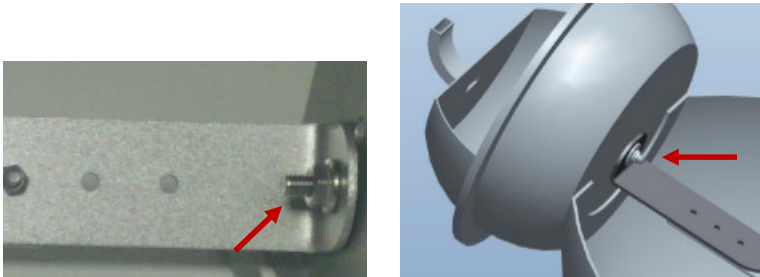


MY LED LIGHTING GUIDE

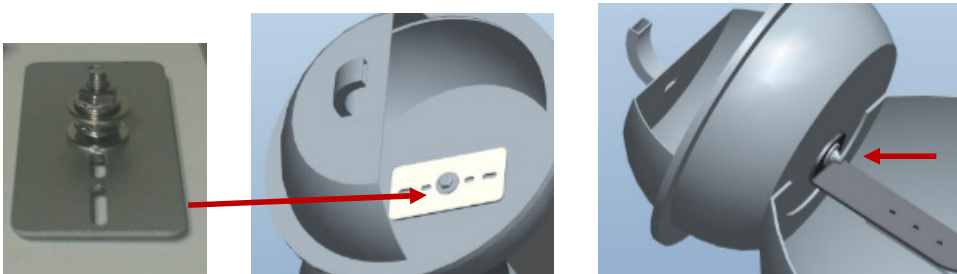
YOUR GUIDE TO ENERGY EFFICIENT LED LIGHTING

Steps:

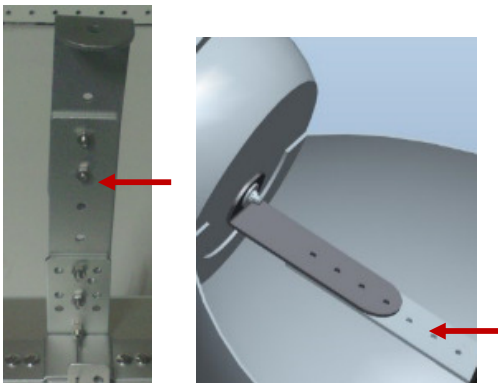
1. Open the ballast box and remove the ballast
2. Remove mogul socket from the bottom side of the ballast box
3. Determine if you can securely attach the top part of the mounting bracket to the ballast box without using the small mounting plate:



4. If more support is required than use the small mounting plate included. Attached it to the ballast box to more securely mount the mounting bracket to the ballast box. You may need to increase the size of the hole to accommodate the mounting plate bolt. Then attach the mounting bracket as above:



5. Attach the other end of the mounting bracket to the desired length (screws are included). The length can be adjusted by moving the brackets up where they meet:

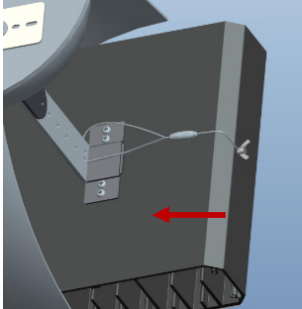




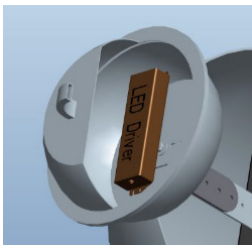
MY LED LIGHTING GUIDE

YOUR GUIDE TO ENERGY EFFICIENT LED LIGHTING

- Adjust the L-Piece on the end of the mounting bracket so it is at a 90-degree angle.
- Mount the LED module on the L-piece at the end of the mounting bracket. There is also safety wire that should be attached:



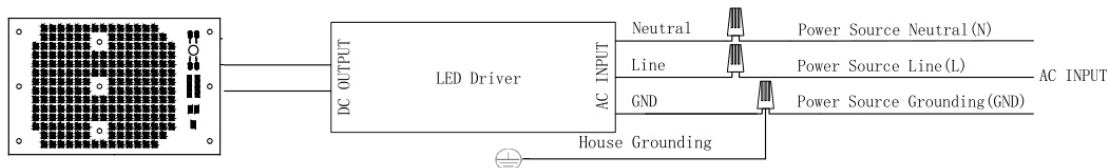
- Install the driver in the ballast box. You will need to find a way to get the wire from in the ballast box to the LED module. Attach the driver wire to the LED model.



- Test fixture – reconnect power.
- Close fixture

Wiring:

- Install the LED driver in place of the ballast.
- Wire the input source to the LED driver. The proper AC input connections to the driver are marked on the driver. There is a Ground, ACN (Neutral) and ACL (Line). **IMPORTANT: MAKE SURE THE WIRING IS PROPERLY GROUNDED.**
- Connect the output wires of the driver to the input wires of the LED Head: **Make certain to connect the Red Wire of the driver output to Red Wire of the LED head, and connect the Black Wire of the driver output to the Black Wire of the LED head.**
- Re-assemble remaining parts of the fixture and restore power.
- Never dim a non-dimmable LED driver. Not intended for use with emergency exits.



www.MyLEDLightingGuide.com
(888) 423.3191

RECOGNIZED
COMPONENT

Intertek
4010246
CONFORMS TO UL ANSI/UL
STD 1598, UL SUB 1598C
CERTIFIED TO CAN/CSA
STD C22.2 NO. 250.0
CSA Letter No. B-79